

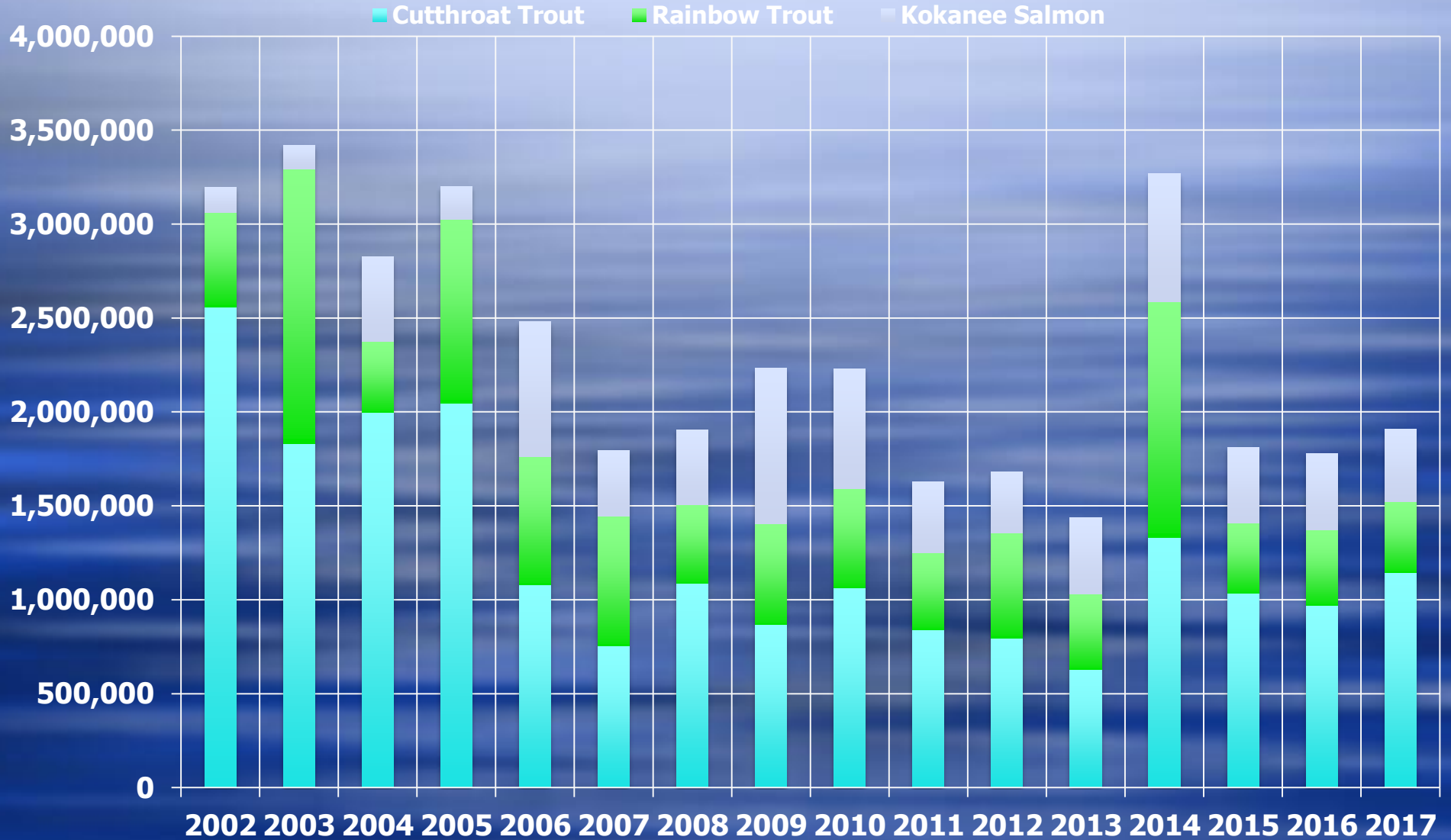
Welcome to Strawberry Kokanee Fishing



Strawberry Fish Plant '02-'17

per DWR report:

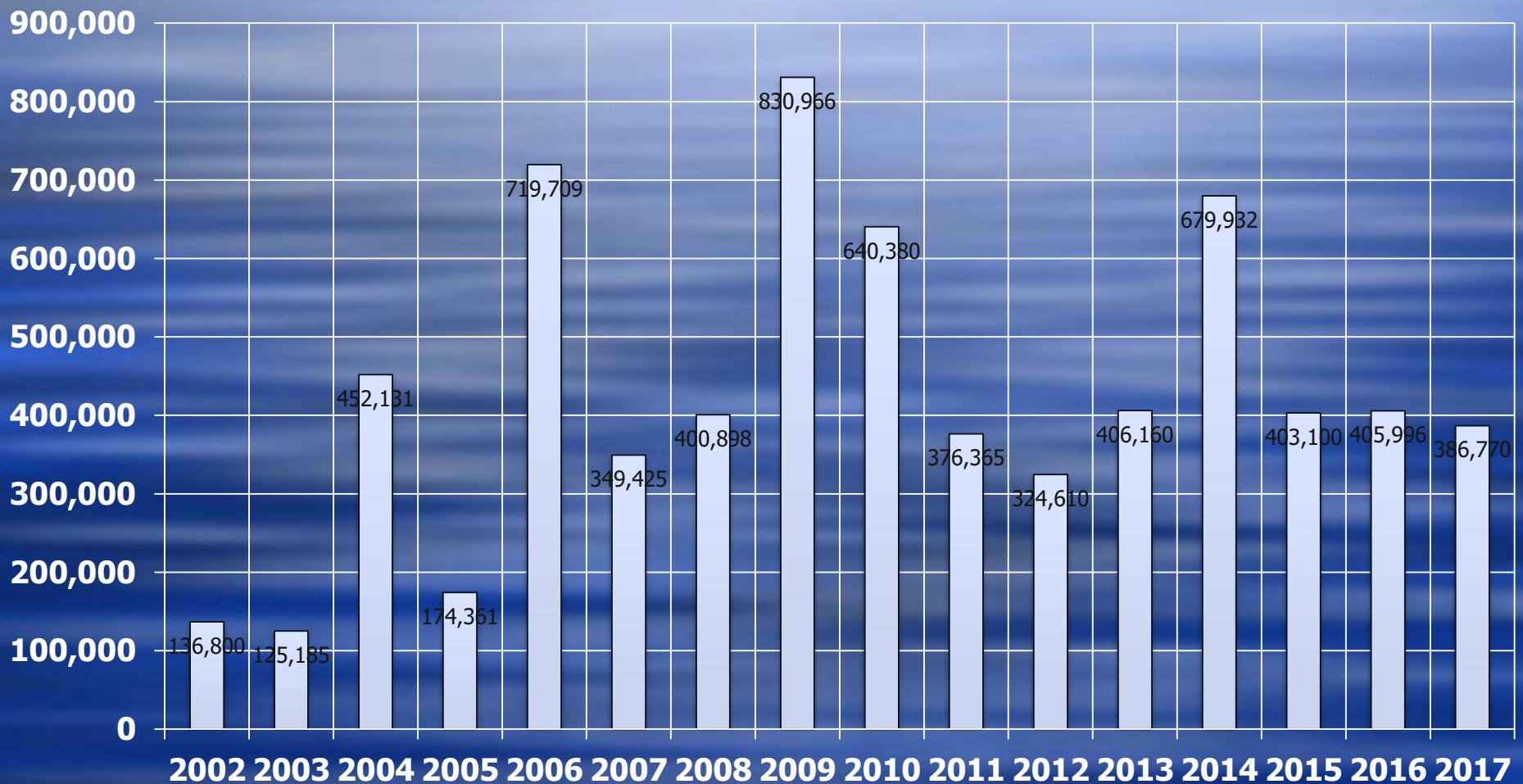
<http://www.utahfishinginfo.com/dwr/fishstockingreport.php>



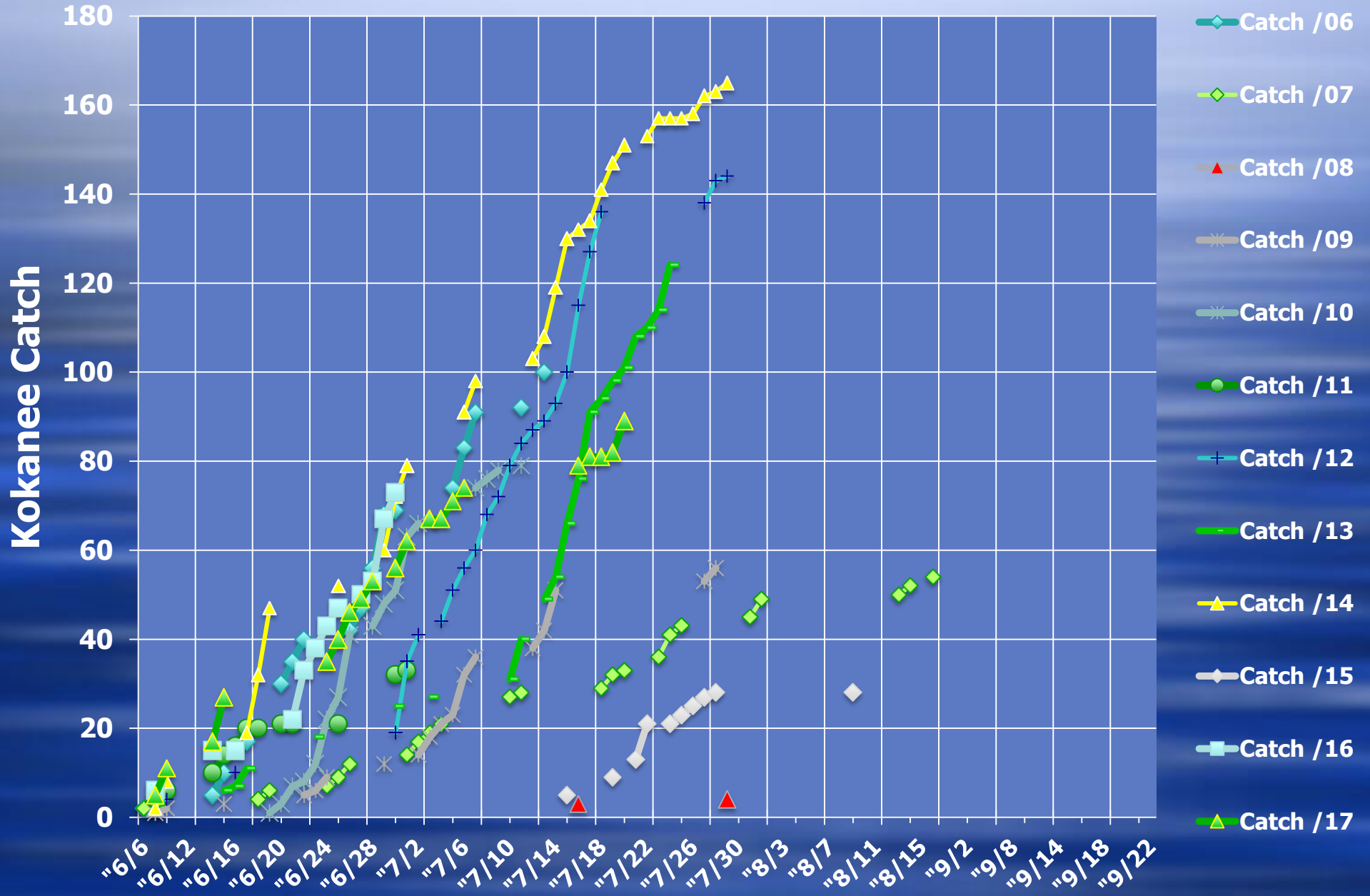
Kokanee Seminar: Strawberry Reservoir

Strawberry Kokanee Plant '02-'17

per DWR report: <http://www.utahfishinginfo.com/dwr/fishstockingreport.php>



Kokanee Catch By Season 2006-2017



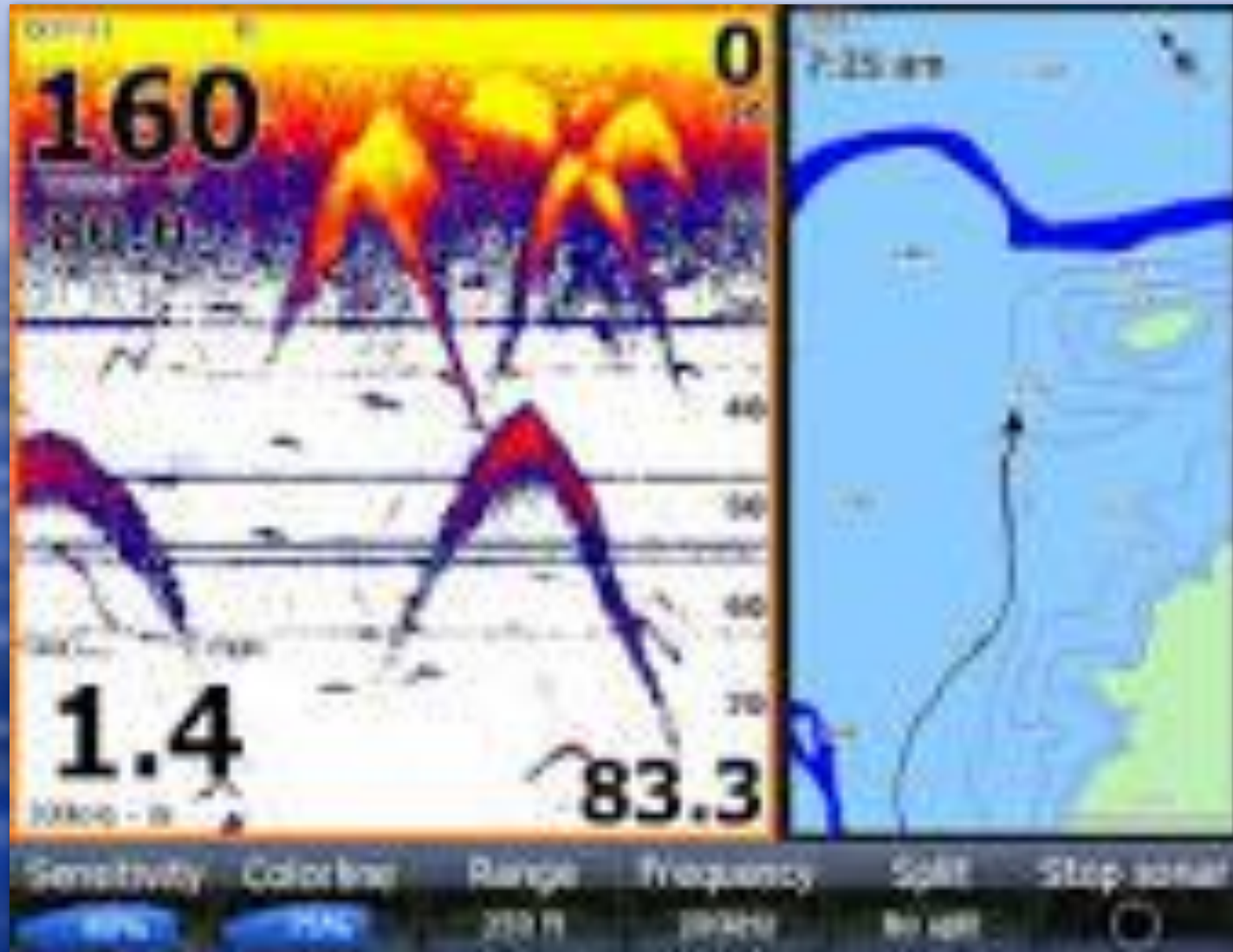
Reading Electronics

1. Use a GPS or some means of knowing your trolling speed. Remember SLOW is the word 1.0-1.2 mph early season May15-June, later... July 1.4-1.6 mph
2. Be careful to match your Lure/Blade combination to the troll speed, see what the fish are going to be looking at.

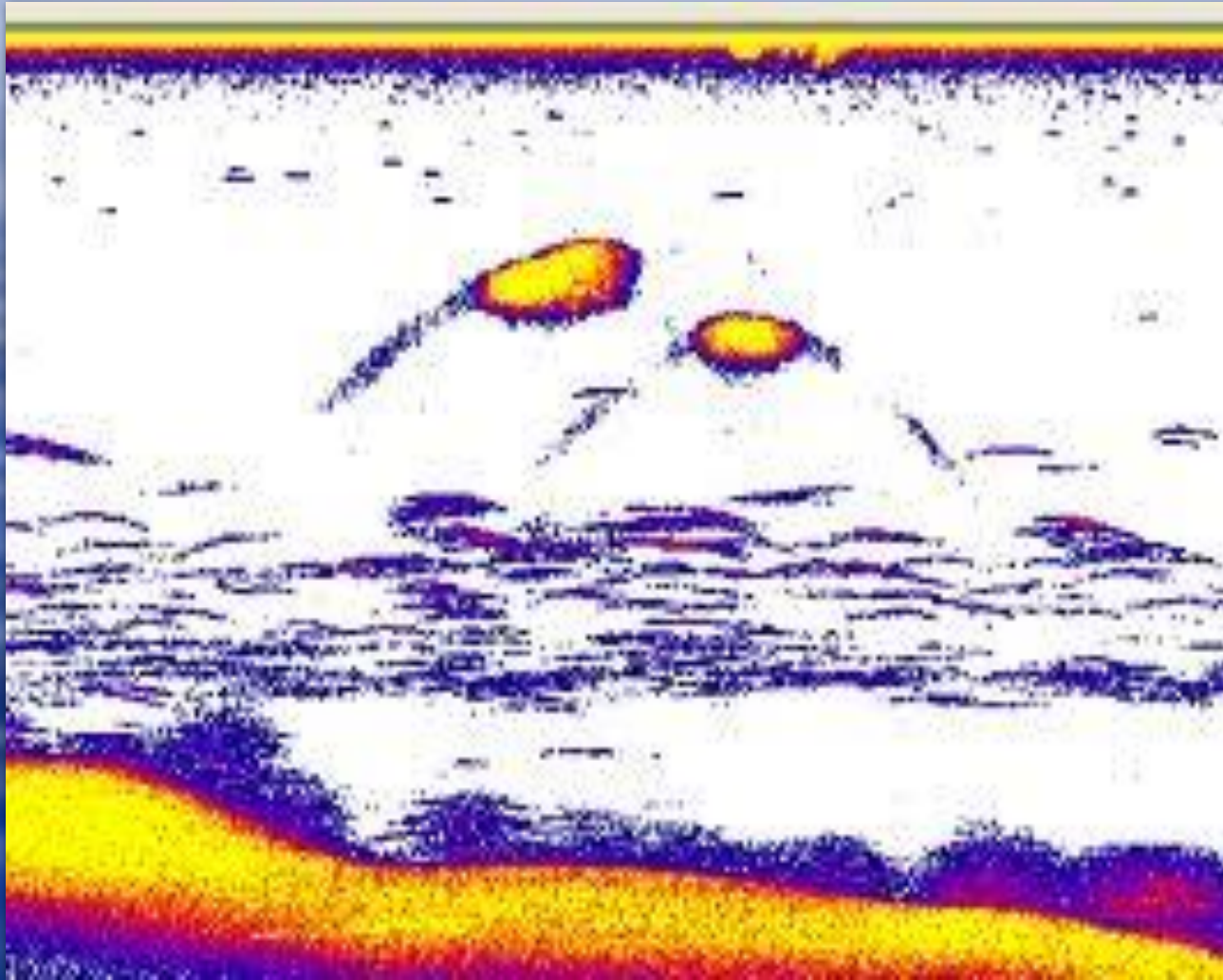
SONAR/ FISH LOCATOR

- ◆ 3. Recommend using a **wide** angle transducer (dual freq are now available on most units). It's all about power and pixels.
- ◆ 4. Driving the power at max gain can give false fish echoes. Back off a little, see a more accurate picture.
- ◆ 5. Try using a range of 20'-60' at Strawberry, vice top to bottom. Gives you more detail and focuses your search where you expect to see Kokanee

Kokanee on Sonar

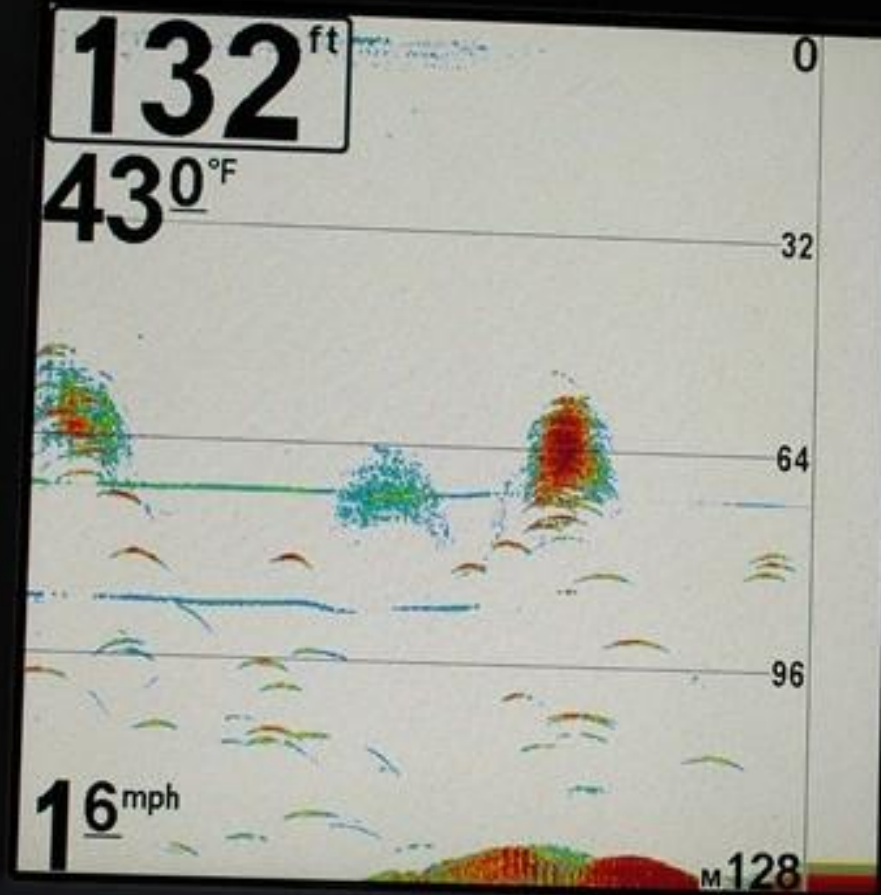


Kokanee At School



HUMMINBIRD

GPS
Capable



VIEW

MENU

EXIT



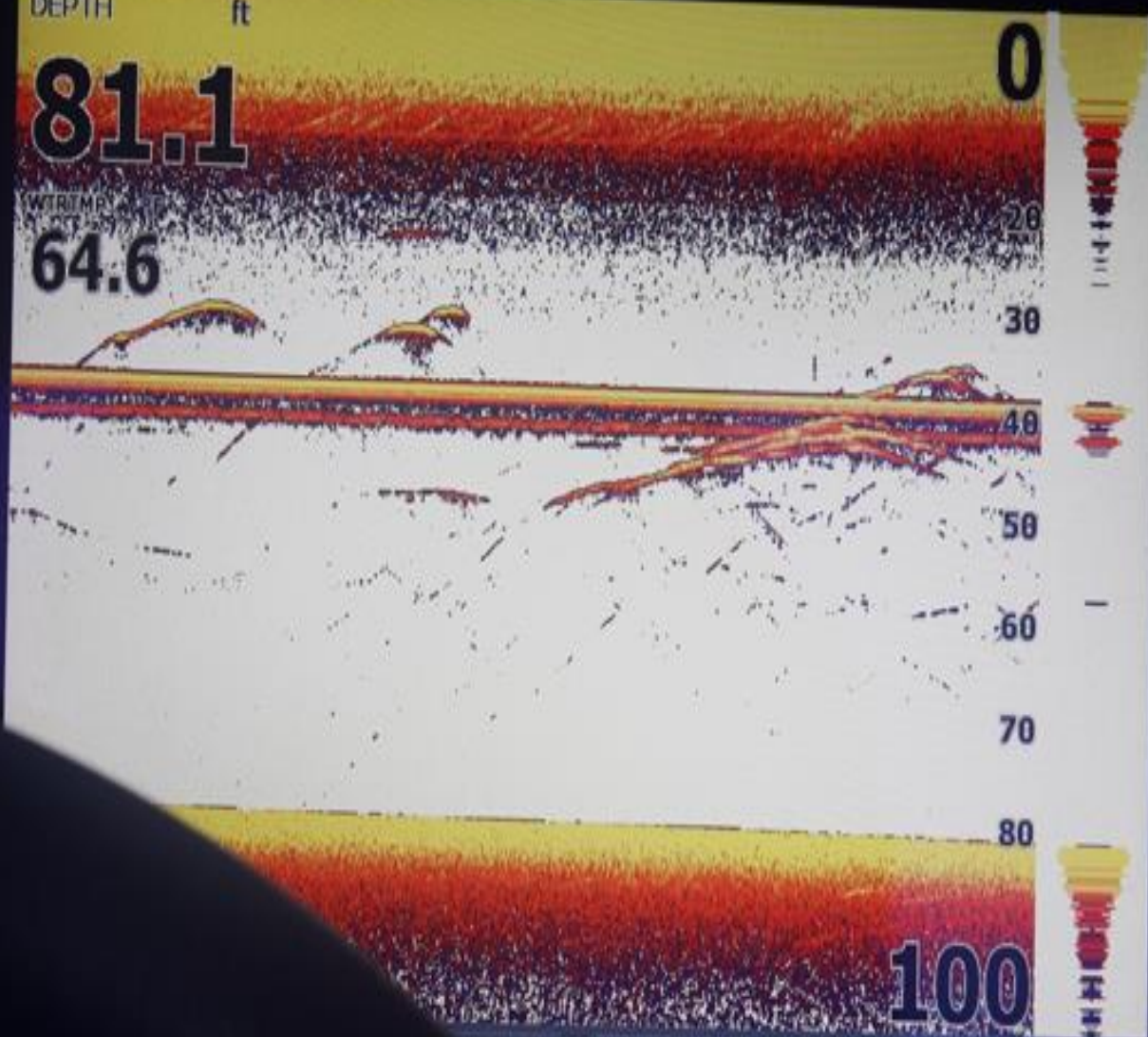
778c
SONAR



DEPTH ft

81.1

WTRTEMP
64.6



0

20

30

40

50

60

70

80

100

Range

Frequency

Split

Stop sonar

ft

200kHz

No split



Auto

ZOUT

ZIN

EXIT

ENTER

MENU

PAGES

WPT
FIND

LIGHT
POWER

HDS 8

Sonar Tips

- ◆ 1. Keep in mind if you are not seeing Kokanee on the finder, they could be up near surface feeding. Cover the water better with wide S turns vice straight line trolling. Angle into shore and back out again.
- ◆ 2. If you're catching other fish but not the Kokanee, try a little deeper 2-3 ft increments until you strike silver.
- ◆ 3. Read your manual, get familiar with all aspects of your unit (practice).

SONAR TIPS

- ◆ 4. We have caught Kokanee as shallow as 8' in very early June, long lining (100' of line out), and lots of wide "S" turns always
- ◆ 5. Troll at 90° to the sun in morning and evening, at mid day it don't matter so much
- ◆ 6. Mid to Late season for Kokanee are usually a little deeper, 35-45' down. Watch for the thermocline as it develops in July
- ◆ 7. A slightly faster troll 1.4-1.6 mph is sometimes more effective in mid to late season Kokanee fishing

Control Depth Fishing



Control Depth Fishing/Trolling for Kokanee

- ◆ 1. Choices: **Best- Down Riggers**, then **Lead-Core line**, last- Varying weight of **Trolling sinkers** ($\frac{1}{2}$ oz to $1\frac{1}{2}$ oz)
- 2. **Down Riggers**, manual-electric.

Electric has advantage of ease of use: you play your fish while down rigger pulls up the cannonball to surface. They have the most accurate placement of trolling depth.
- 3. We use a minimum of 21 ft set back from the cannonball for our terminal gear.

Control Depth Fishing/Trolling for Kokanee

- ◆ 1. Lead Core line on a level wind reel and rod combo. Use 15-20 feet of leader at the end of the lead line, then place a ball bearing swivel and your terminal gear.
- ◆ 2. Each color coded section of line is 30' long and represents 5 ft of depth, depends on boat speed and resistance of your terminal gear. 5-6 colors is usually good at Strawberry.

Control Depth Fishing/Trolling for Kokanee

- ◆ 3. Watch not to put any kinks in your lead core line, they are permanent.
- ◆ 4. Set your drag on the level wind reel pretty light, lead core line does not stretch. Use your thumb on the spool when setting the hook. Adjust drag carefully, keep it light. Keep steady pressure on.. any slack, and they are gone. Horse too hard and they are gone.

Control Depth Fishing/Trolling Weights

- ◆ 1. Using various weights of trolling sinker (keel blade and bead chain swivel) will get your presentation down there but it will take a fair amount of trial and error to develop the right combo for that day.
- ◆ 2. Vary your boat speed to climb up and down the water column. Use slow "S" turns in all Kokanee fishing techniques
- ◆ 3. If all you are catching are Cutthroats, you need to slow down a bit or add a little more weight to get down some more.

Kokanee Summary



What To Use for Kokanee

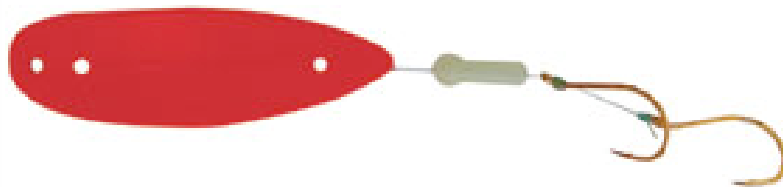
We Recommend Downriggers

EARLY SEASON Early JUN-1ST WEEK JUL	MAIN BITE <u>5 JUL- 10 AUG</u>
POP GEAR /Worm OR action lures	Dodgers and Lures faster 1.2-1.6 mph
Dodgers and Lures at slow 1.0 -1.2 mph	Try APEX HotSpots in UV orange, pink, chartreuse, Fl Red, Fl Chartreuse
Depth: shallow to 25ft, Watch your bait action, real shallow use longer line 100+ ft	Depth: 25-45 ft Try multi colored lures like Assassins, Fl org/Fl grn wedding rings,

Apex Hot Spot Kokanee Killers

Kokanee Special (Sizes 1.0 and 1.5 inch): The latest lure technology from Hot Spot.

Rigged with glow bead and twin Gamakatsu hooks.



#310 Kokanee Red



#75 Chartreuse



#130 Jellyfish U.V.



#138 Pink Haze U.V.



#302 Flame Sparkle



#312 Fire Tiger



#78 Red Pearl



#131 Purple Haze U.V.



#139 Orange Haze U.V.



#308 Hot Pink Glow



#409 Watermelon



#92 Purple Pearl



#136 Chart. Haze U.V.



#195 Chrome Fishscale



#309 Flame Orange Glow



#420 Doom

UV Squids and Tubes

Always Shorter Leaders(5-12") as they need more action behind a dodger



33252 Pink/Green 2.25" Setup



41555 TWO-TONE PINK 1.5" Tube

4.25" Lime & Pink 50/50 Fire Ice



4.25" UV Pink Hyper



4.25" Pink Bahama



UV Squids and Tubes

Always Shorter Leaders(12-15") as they need more action behind a dodger

U.V. Cotton Candy



UV Pink Hottail



4.25" Lime & Pink 50/50 Fire Ice



Crystal Orange-N-Chart Assassin Spinner



4.25" UV Pink Hyper



4.25" Pink Bahama



Kokanee Tackle Sources:

<http://www.rockymountaintackle.com>

http://www.hotspotlures.com/products_apex_kokanee.php

<http://p-line.com>

<http://www.radicalglow.com/catalog/index.php?cPath=38>

<https://www.luhrjensen.com/>

<https://www.mackslure.com/>

<https://www.kokaneetackle.com/m-41-shasta-tackle-company.aspx>

<http://www.vancestackle.com/dodgers.html>

<http://www.kokaneepower.org/articles/3.pdf>

<https://www.kokaneefishingforum.com/fishing-forums/forumdisplay.php?5-Flaming-Gorge-Kokanee-Reports>

Where To Look for Strawberry Kokanee

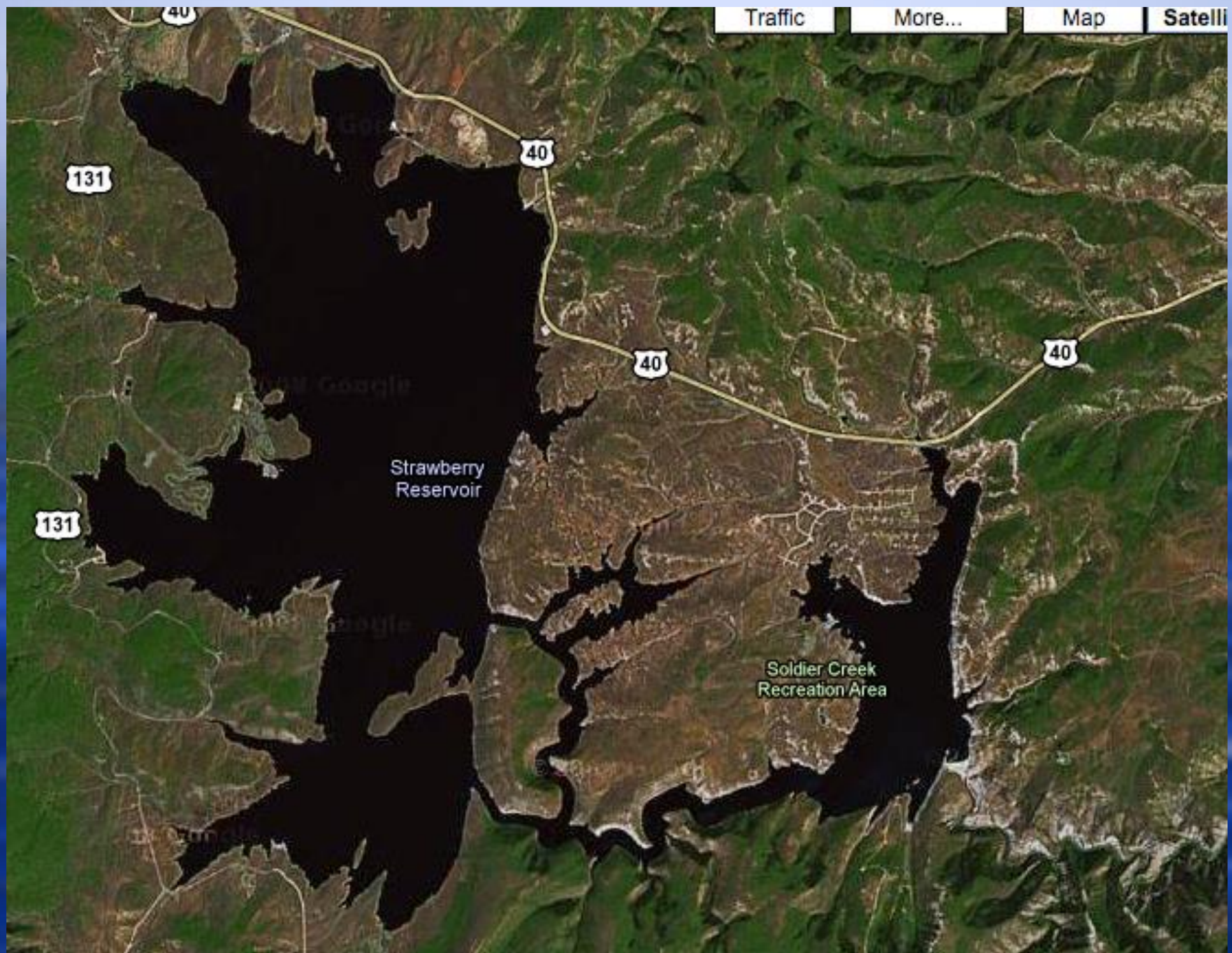


Traffic

More...

Map

Satelli



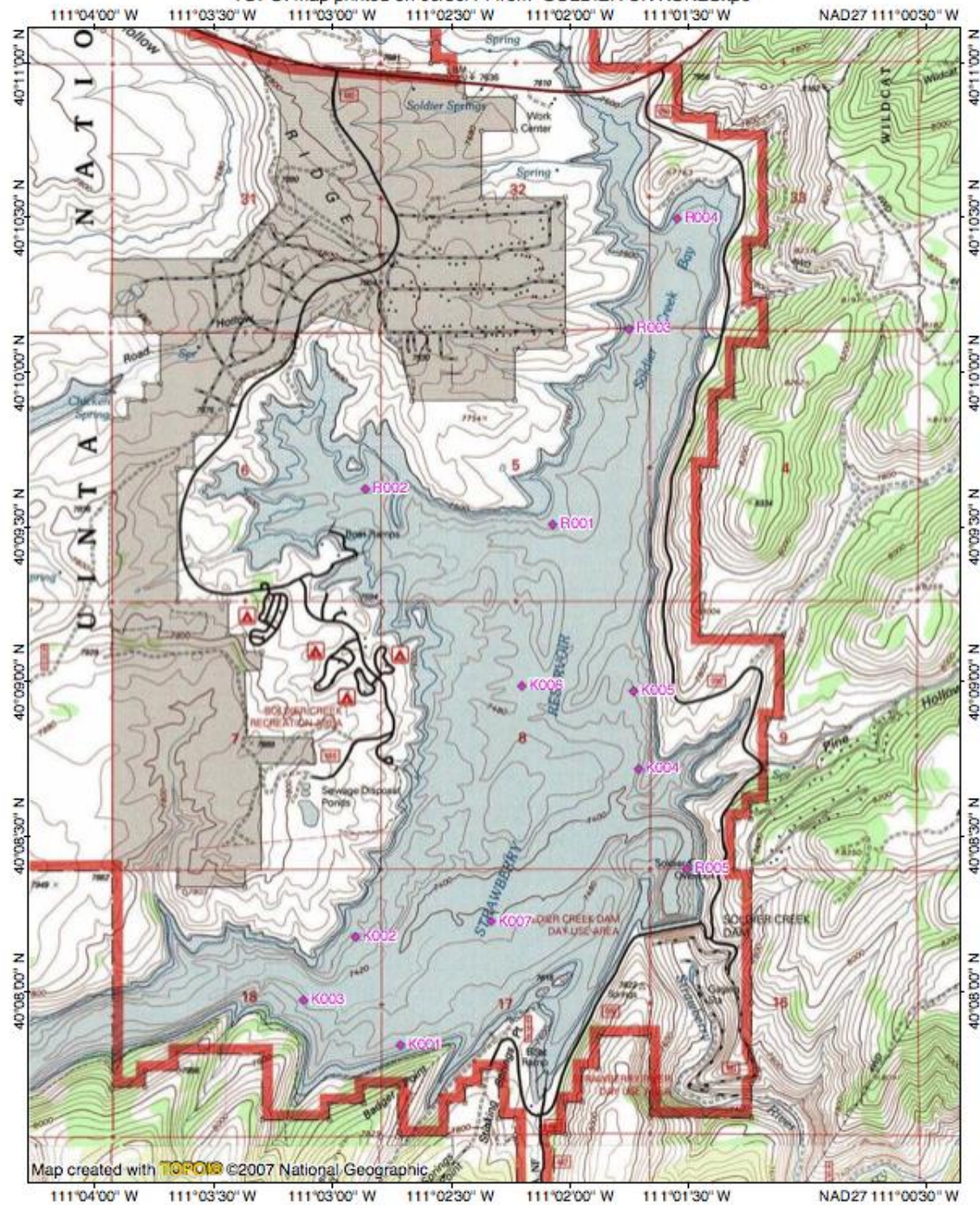
Strawberry
Reservoir

Soldier Creek
Recreation Area

Strawberry GPS (NAD 27) for Kokanee -2017

GPS Name	Latitude	Longitude	Elevation	Local Date
015	40°10.649' N	111°07.243' W	7562 ft.	06/22/14 C
030	40°11.424' N	111°07.989' W	7562 ft.	08/14/15 C
041	40°10.989' N	111°07.622' W	7562 ft.	07/08/16 C
042	40°10.889' N	111°07.774' W	7562 ft.	06/21/17 C
044	40°10.868' N	111°07.774' W	7562 ft.	06/07/15 C
045	40°10.965' N	111°07.080' W	7569 ft.	07/07/17 1
046	40°11.496' N	111°07.567' W	7566 ft.	07/08/17 1
047	40°10.997' N	111°07.886' W	7562 ft.	07/13/17 1

TOPO! map printed on 06/30/14 from "SOLDIER CK KOKES.tpo"



Soldier CK for Kokanee

GPS Name	LatitudeLongitude		Elevation		Local Date & Time
K001	40°	07.827' N	111°	02.720' W	7579 ft. 06/30/14 06:00:21 AM
K002	40°	08.176' N	111°	02.904' W	7575 ft. 06/30/14 06:01:14 AM
K003	40°	07.968' N	111°	03.125' W	7575 ft. 06/30/14 06:02:34 AM
K004	40°	08.716' N	111°	01.712' W	7575 ft. 06/30/14 06:03:50 AM
K005	40°	08.968' N	111°	01.735' W	7575 ft. 06/30/14 06:04:13 AM
K006	40°	08.988' N	111°	02.205' W	7575 ft. 06/30/14 06:04:42 AM
K007	40°	08.226' N	111°	02.335' W	7575 ft. 06/30/14 06:05:22 AM
R001	40°	09.510' N	111°	02.075' W	7575 ft. 06/30/14 06:06:33 AM
R002	40°	09.622' N	111°	02.865' W	7575 ft. 06/30/14 06:07:15 AM
R003	40°	10.138' N	111°	01.754' W	7575 ft. 06/30/14 06:07:38 AM
R004	40°	10.496' N	111°	01.552' W	7575 ft. 06/30/14 06:08:04 AM
R005	40°	08.396' N	111°	01.510' W	7575 ft. 06/30/14 06:08:55 AM



Annual Strawberry Cutthroat/Kokanee Catch/Catch Rate Comparisons

Cutthroat Trout Kokanee Cutthroat Trout Catch Rate Kokanee Catch Rate

